



Flinders Christian Community College

Latrobe City Campus



*Excellence
Integrity
Faith*

CONTENTS

COLLEGE GOVERNANCE AND PARENT INVOLVEMENT	1
THE NAME	2
THE LOCATION	2
COLLEGE LOGO	2
OUR VISION	4
OUR MISSION	4
FLINDERS BY DESIGN - FBD	5
KEY ELEMENTS OF FLINDERS BY DESIGN INCLUDE:	6
WE VALUE	6
ORGANISATIONAL STRUCTURE 2014	8
PHILOSOPHY OF EDUCATION	10
CHARTER GOALS	10
COLLEGE EXPECTATIONS OF BEHAVIOUR	11
POLICY	11
UNIFORM REGULATIONS	12
PARENTS AND FRIENDS	15
WORKING BEE POLICY	16
APPLICATION FOR ENROLMENT	17
BUSES	17

INTRODUCTION

Flinders Christian Community College was founded in 1983 and now has three campuses located at Tyabb, Carrum Downs and the Latrobe City Campus, Traralgon, which was established in 2004.

It is a non-denominational, Christian, co-educational, Primary and Secondary school with a low fee structure. At Flinders we strive to maximise opportunities and encourage each student to develop their intellectual, spiritual and physical potential as we work in partnership with the student and their parents.

We seek to provide an engaging academic program and the knowledge and understanding of the central truths of the Christian faith. Students are encouraged to develop their own faith and relationship with God and other people.

The Latrobe City campus is a member of the Gippsland Independent Schools Association and Christian Schools Australia.

Our staff are carefully selected and each is committed to excellence in teaching and learning, and to the pastoral care of every student. Students belong to one of four Houses and a formal leadership program operates in Primary and Secondary sections.

The environment at Flinders is friendly, caring, structured and engaging, and provides many opportunities for students to fulfil their interests and abilities.

The curriculum is well planned and purposeful, designed to meet the needs of Early, Middle and Senior students from Prep to VCE within the Victorian Curriculum and Assessment Authority curriculum guidelines. We have age appropriate learning areas to match the developmental needs of students. The VCE Senior Learning Centre, opened in 2009, is a good example of this approach.

We offer a diverse range of VCE subjects providing the basis for tertiary pathways. Students utilise the flexible delivery of subjects and online the learning system MOODLE operates throughout the whole school from Prep to VCE. This is supported by generous high quality and well serviced ICT resources.

COLLEGE GOVERNANCE AND PARENT INVOLVEMENT

The Board of Governance is made up of Christian business people, educators and parents elected from the Flinders Christian Community College Incorporated Association, which is a small body of people who maintain the function, standards and activities of the College. The school has a vibrant Parents and Friends Association.

THE NAME

The name Flinders Christian Community College reflects our community nature and the desire of families to exercise their right of choice of education for their children based on Christian values.

THE LOCATION

The Latrobe City Campus is located on an attractive site at the corner of Liddiard and Lansdowne Roads, Traralgon. The well-equipped campus includes an oval giving students access to a large area for sport and recreation.

We invite you to contact one of our friendly staff on 03 5173 0500 to discuss how we can assist your child. Tours are conducted by appointment at a time that suits you.

Principal:
Mr Julian Van Tienen

COLLEGE LOGO



THE CROWN OF GLORY

THE SHIELD OF FAITH

THE CROSS OF CHRIST

**THE BANNER OF TRUTH
(EMBOSSSED WITH THE MOTTO)
"GROW IN LOVE"**

The Flinders Christian Community College Logo emphasises the Christian nature of this school:

“...By speaking the truth in a spirit of love,
We must grow up in every way to Christ, who is the Head.
Under His control the different parts of the body fit together,
And the whole body is held together by every joint with which it is provided.
So when each separate part works as it should,
The whole body grows and builds itself up through love.”
Ephesians 4:15 & 16

Flinders Christian Community College aims to provide opportunities for students to learn the truth of the Gospel message and be challenged to develop their personal faith in God.

The Christian message is presented to the whole school at assemblies and fortnightly Chapel services. Many of our students lack a strong conviction of the Christian faith and some students have very little background in Christian teachings. We provide opportunities for our students to develop their personal faith in God, and to discuss and explore their faith in a supportive environment.

Each school day commences with a brief reading from the Bible or Devotional and prayer time, followed by an attendance check and reading the daily bulletin.

CHARTER

OUR VISION

To provide excellent Christian education for as many young people as possible.



OUR MISSION

Flinders Christian Community College aims to provide Christian education that enables students to learn, develop in character, and in relationship with Jesus Christ and prepares them to take a purposeful place in community.

FLINDERS BY DESIGN - FbD

The Vision and Mission of Flinders Christian Community College inform the policies and practices of the school. Flinders is designed and operated to achieve long term results related to student understanding, transfer of learning to authentic, real world contexts and dispositions for lifelong learning, personal faith in Jesus Christ and service in the Kingdom of God.

Flinders by Design (FbD) is a call to action within our College by corporate services, individual campuses and other institutions which form part of Flinders operations to promote genuine and sustained student understanding.

FbD uses backward design that involves the following three stage process:

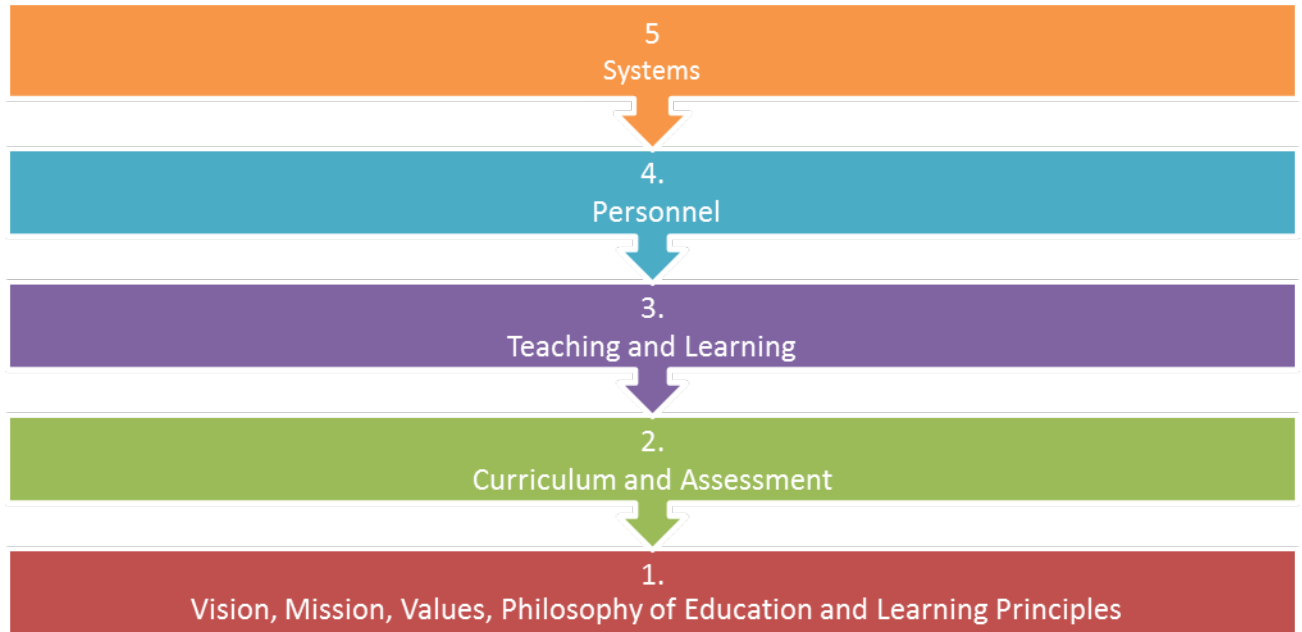
- | | |
|---------|----------------------------------------------------------------------------------------|
| Stage 1 | Identify desired results |
| Stage 2 | To determine acceptable evidence that will show the desired results have been achieved |
| Stage 3 | Plan actions to achieve goals |

Flinders by Design is the framework for developing this Strategic Plan for Flinders Christian Community College 2014 – 2019 which seeks to action the College Charter: Vision, Mission, Values, Philosophy of Education and Goals.

The noblest pleasure is the joy of
understanding
Leonardo da Vinci

KEY ELEMENTS OF FLINDERS BY DESIGN INCLUDE:

1. Vision, Mission, Values, Philosophy of Education and Learning Principles
2. Curriculum and Assessment
3. Teaching and Learning
4. Personnel
5. Systems¹



WE VALUE

- excellence, integrity and faith
- each person as a unique creation of a loving God
- respect for self and others
- growth and dependence on God and the transforming work of Christ
- lifelong learning
- a safe and nurturing environment
- a strong partnership between staff, students, families and community
- unity in the Christian faith and school community.



¹ Adapted from Schooling by Design Mission, Action and Achievement, Grant Wiggins and Jay McTighe, ASCD 2007

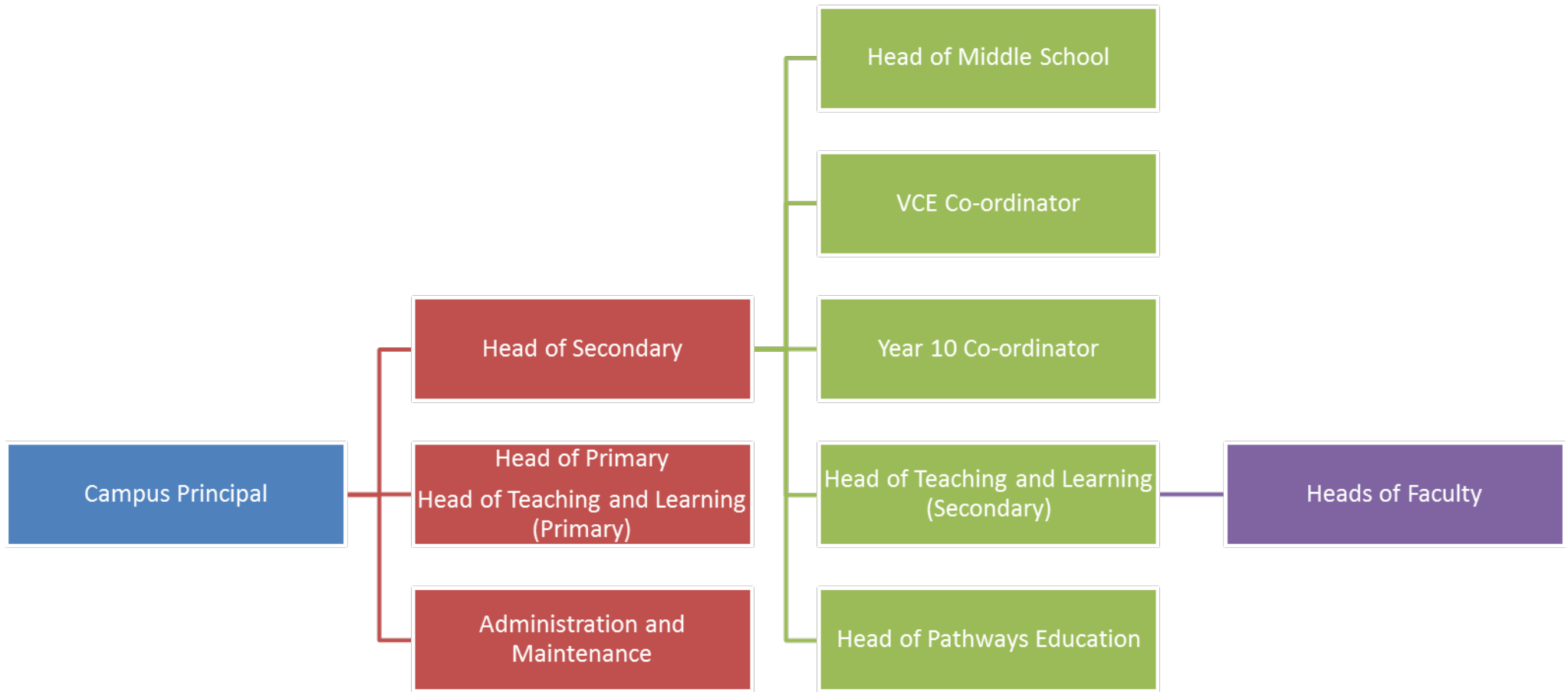
The College therefore, attempts to create and sustain an innovative learning environment that deals holistically with the educational, relational, spiritual and physical needs of students from a biblical perspective.

Flinders Christian Community College acknowledges God's grace as the source of all gifts of humankind and the resources of creation, and accepts the Bible as God's Truth. The College seeks to encourage students and staff to serve the local and global community.

Flinders Christian Community College supports the principles and practice of Australian democracy in accordance with Australian law, which includes: respect for the authority of the elected government; the rule of law; equal rights for all; freedom of religion; freedom of speech and association. Such principles will be viewed and promoted from a Christian perspective.

**Flinders Christian Community College
aims to bring honour to God
in all aspects of life**

ORGANISATIONAL STRUCTURE 2014





PHILOSOPHY OF EDUCATION

Flinders Christian Community College seeks to create and sustain an innovative learning environment that deals holistically with the educational, relational, spiritual and physical needs of students from a Biblical perspective.

CHARTER GOALS

1. Encourage achievement of the highest possible academic outcomes
2. Encourage personal, social, emotional, academic and spiritual growth
3. Encourage critical and constructive thinking
4. Identify and respond to the particular learning styles and rate of development of each student
5. Apply curriculum knowledge and a range of teaching approaches to maximise learning for each child from a biblical perspective in a safe and nurturing environment
6. Support professional learning and reflection for staff and students
7. Develop, document and present curriculum that unfolds an understanding of God's world and fosters a positive response towards God, others and the world in which we live. To inculcate a positive school culture which seeks to value all by displaying love, grace, compassion and forgiveness.
8. To inculcate a positive Christian school culture which seeks to value all by displaying love, grace, compassion and forgiveness
9. Promote wise stewardship of time and natural resources; encourage a practical response to environmental and social issues.
10. Promote a mission awareness both overseas and in the local community
11. Attract, develop and retain quality Christian personnel

COLLEGE EXPECTATIONS OF BEHAVIOUR

The College uses a restorative justice approach to Behaviour Management.

Now we ask you brothers (students) to respect those who work hard among you, who are over you in the Lord and who admonish you. Hold them in the highest regard in love because of their work. And we urge you, brothers, warn those who are idle, encourage the timid, help the weak, be patient with everyone. Make sure nobody pays back wrong for wrong, but always try to be kind to each other, and to everyone else. Be joyful always; pray continually; give thanks in all circumstances, for this is God's will for you in Christ Jesus (1Thessalonians 5:12-13).

LOVE: Show your love and respect for God by making right choices

JOY: Love Jesus, others and yourself

PEACE: Respect your fellow pupils-their needs and gifts

KINDNESS and GOODNESS: Be kind and encouraging in your actions and speech

PATIENCE and TOLERANCE: Respect that each person is uniquely created by God and tolerate their differences

GENTLENESS: A sensitive, yet assertive approach in social contexts

FAITHFULNESS: Persevere in your pursuit of truthfulness, wisdom and excellence to become dependable and reliable citizens

SELF CONTROL: Develop an inner desire to achieve self-mastery within gracious boundaries

(Galatians 5:22-23)

POLICY

All members of the school community will aim to *Grow in Love*, respect others and their right to be safe, to learn and to belong. They will uphold the ethos of the College at all times, obey its rules and be responsible for their own actions and reflect Christ in attitude and behaviour.

The College will seek to work in partnership with parents to encourage and reinforce desirable behaviour and character, positive self-management and to discourage and apply consequences for unsatisfactory attitudes and behaviour.

Staff and students are expected to show good character and maintain a high standard of obedience, honesty, courtesy, morality, tidiness and safety and reflect such behaviour at home, school or elsewhere.

Members of the school are to be constantly aware of their actions and make every endeavour to bring credit to themselves, their parents and the school. This includes: when travelling to and from school, at school and in their social lives.

Students are to wear correct school uniform with pride and keep their appearance neat.

There is to be no bullying or harassment of any kind including via electronic means (see Bullying and Harassment Policy).

UNIFORM REGULATIONS

To maintain a high standard, the following rules will apply:

1. The school uniform, as listed, must be correctly worn at all times, including to and from school, and maintained in a clean condition. Girls' dresses and skirts must be knee length i.e. skirt must at least touch the floor when kneeling. Girls' trousers are optional winter wear. For formal occasions, excursions and photos full College uniform is to be worn. Students are not permitted to wear PE uniform to and from school unless with permission.
2. Grey shorts are an optional summer dress item for boys and if worn must be in conjunction with grey College socks. (Please note however, that long grey trousers will be mandatory wear for official school occasions, so boys electing to wear shorts will require both types of trousers.)
3. Blazers (Secondary only) must be worn to and from school unless directions are given to the contrary by the Campus Principal. If a jumper is worn to or from school it must be worn under the blazer (i.e. in conjunction with and not just on its own). Students riding a bicycle to and from school need not wear the blazer, but a bicycle helmet is compulsory.
4. Changeover dates for uniform will be determined dependent on weather conditions at the time. As part of Sun Smart policy, a College hat must be worn outside at all times during Terms 1 and 4.
5. Students are permitted to wear wrist watches, matching gold/silver studs or sleepers (worn in ear lobes only). Nail polish, make-up, body piercing or body art are not to be worn at school.
6. HAIR: Neatness is of paramount importance in regard to hair styles. Hair must be worn above the shirt collar and off the face or tied back. Hairstyles such as: rat tails, dreadlocks, mohawks or completely shaven heads are unacceptable. Bright hair colouring is not acceptable. No beards or moustaches are to be grown during term time.

Ribbons and headbands are to be College colours. Hair elastics may be black or brown or in school uniform material. The College reserves the right to determine what constitutes acceptable grooming.

7. Raincoats may be clear, grey, maroon or yellow plastic or nylon. No duffle coats or parkas are to be worn. Uniform Spray jackets may be worn but not in place of the blazer.
8. Shoes are to be plain black, lace-up school shoes (no platform or sports shoes). Shoes are to be a traditional style. Plain black Velcro school shoes are acceptable for Prep only. College socks are compulsory at all times.

GIRLS SUMMER UNIFORM

Maroon and white check dress (knee length)
 College blazer (Secondary only)
 Flinders College short white socks
 Maroon College jumper
 VCE Jumper (Year 11 and 12 only)
 Maroon ribbons/headbands
 Uniform fabric scrunchie
 Black/brown hair elastics
 Plain black lace-up school shoes
 (no platform or sports shoes)
 Plain black Velcro shoes (Prep only)

GIRLS WINTER UNIFORM

White long sleeved shirt, or
 Secondary students only may opt to wear a
 Jac shirt
 College tartan pinafore (knee length) Prep – 4
 (optional Grade 5 and 6)
 College tartan skirt (knee length) (Secondary
 only, optional Grade 5 and 6)
 College Trousers (optional)
 Plain College grey tights OR
 Flinders College grey knee socks
 Maroon College jumper
 VCE Jumper (Year 11 and 12 only)
 College blazer (Secondary only)
 Plain black lace-up school shoes
 (no platform or sports shoes)
 Plain black Velcro shoes (Prep only)
 Maroon scarf (optional)
 Maroon gloves

GIRLS PE UNIFORM (WINTER/SUMMER)

Embroidered White/Maroon Representative
 sports polo (School Rep. students only)
 Embroidered House Coloured PE Polo
 Black track pants with College colours
 Maroon/gold rugby top
 Embroidered Black PE shorts (no pockets)
 Flinders College white sports socks
 Sport shoes
 Black or Maroon athletic pant (boyleg)
 Flinders College Maroon hat
 OPTIONAL: Spray Jacket

BOYS SUMMER UNIFORM

College grey trousers with plain black belt
 College blazer (Secondary only)
 Flinders College grey short socks
 Plain College grey shorts (optional)
 White short sleeved open neck shirt
 Maroon College jumper
 VCE Jumper (Year 11 and 12 only)
 Plain black lace-up school shoes
 (no platform or sports shoes)
 Plain black Velcro shoes (Prep only)

BOYS WINTER UNIFORM

White long sleeved shirt
 College grey trousers with plain black belt
 College tie
 Flinders College grey short socks
 Maroon College jumper
 VCE Jumper (Year 11 and 12 only)
 College blazer (Secondary only)
 Plain black lace-up school shoes
 (no platform or sports shoes)
 Plain black Velcro shoes (Prep only)
 Maroon scarf (optional)
 Maroon gloves

BOYS PE UNIFORM (WINTER/SUMMER)

Embroidered White/Maroon Representative sports
 polo (School Rep. students only)
 Embroidered House Coloured PE Polo
 Maroon/gold rugby top
 Black track pants with College colours
 Embroidered Black PE shorts (no pockets)
 Flinders College white sports socks
 Sport shoes
 Flinders College Maroon hat
 OPTIONAL: Spray Jacket

A College bag (with logo) and a PE/Sports bag is compulsory for secondary students.

A College bag (with logo) is compulsory for primary students.

Both are available from our uniform shop.

Primary students are required to have an Art smock for Art classes.

The official College pencil case and homework satchel are available from the College Office.

The official uniform suppliers are:

Flinders Christian Community College, Traralgon

03 5173 0500

The Bounty Shop, Thompson St, Frankston

03 9783 3402

Knowledge Time, Titan Drive, Carrum Downs

03 9775 1764

Pricelists are available at our website under 'Enrolment'.

PARENTS AND FRIENDS

An active Parents and Friends group meet monthly to plan and organise various fund raising events. This group of parents is dedicated to the ongoing growth and developments of Flinders Christian Community College and seeks to serve the school in a very practical way.

Flinders Christian Community College has had a very long and successful tradition of parent involvement in working bees. As a result, the College has enjoyed well-maintained grounds for the children. All families with children at Flinders College agree to make a Working Bee Contribution when they sign the Enrolment Agreement accepting a placement at the College.

The working bee requirement for all families with children attending Flinders Christian Community College is 8 hours per year per family, undertaken at Saturday morning working bees conducted at each campus. Parents and Secondary age students can all contribute to achieving the 8 hours over the course of a year. Two parents and two eligible children working two hours each on a Saturday morning would meet the family working bee requirement for the year. Alternatively, hours can be accumulated over several working bee sessions.

The College understands that some families have commitments that preclude their involvement in working bees. These families agree to pay a 'payment in lieu of working bee'. This payment is \$180 per family.

Some families have chosen to contribute to the school in alternative ways to the working bee. In order for the business office to administer this component of the fee schedule, it has become necessary to clarify these alternatives.

The following is a defined list of acceptable working bee alternatives that will qualify for a working bee credit for families:

Netball and Basketball Coaching and Team Management

One whole season of uninterrupted coaching or team management (This equates to approximately one hour per week over a 20 week period).

Perceptual Motor Program (PMP)

Two full terms of parental assistance (This equates to 45 minutes per week over a 20 week period).

Literacy Assistance

Assistance in the Primary grades at least once a week over two terms.

Parents and Friends

Significant work as approved by the Campus Principal.

Other Voluntary Work

Significant contribution of hours for an event, activity or program are required. The hours must be pre-approved by the Campus Principal.

The College values greatly the significant contribution made by parents at working bees.

WORKING BEE POLICY

Flinders Christian Community College has had a very long and successful tradition of parent involvement in working bees. As a result, the College has enjoyed well-maintained grounds for the children. All families with children at Flinders College agree to make a Working Bee Contribution when they sign the Enrolment Agreement accepting a placement at the College.

The working bee requirement for all families with children attending Flinders Christian Community College is 8 hours per year per family, undertaken at Saturday morning working bees conducted at each campus. Parents and Secondary age students can all contribute to achieving the 8 hours over the course of a year. Two parents and two eligible children working two hours each on a Saturday morning would meet the family working bee requirement for the year. Alternatively, hours can be accumulated over several working bee sessions.

The College understands that some families have commitments that preclude their involvement in working bees. These families agree to pay a 'payment in lieu of working bee'. This payment is \$180 per family.

Some families have chosen to contribute to the school in alternative ways to the working bee. In order for the business office to administer this component of the fee schedule, it has become necessary to clarify these alternatives.

The following is a defined list of acceptable working bee alternatives that will qualify for a working bee credit for families:

Netball and Basketball Coaching and Team Management

One whole season of uninterrupted coaching or team management (This equates to approximately one hour per week over a 20 week period).

Perceptual Motor Program (PMP)

Two full terms of parental assistance (This equates to 45 minutes per week over a 20 week period).

Literacy Assistance

Assistance in the Primary grades at least once a week over two terms.

Parents and Friends

Significant work as approved by the Campus Principal.

Other Voluntary Work

Significant contribution of hours to an event, activity or program. The hours must be pre-approved by the Campus Principal.

The College values greatly the significant contribution made by parents at working bees.

APPLICATION FOR ENROLMENT

When applying to Flinders Christian Community College, the following procedure is followed:-

- An application form must be completed and submitted together with a fee of \$100 per student to register each applicant. For prep applications a copy of the Birth Certificate and Immunisation History is required. All other applications require a copy of the last two school report and NAPLAN test. Forward applications to:

Flinders Christian Community College
PO Box 9298
TRARALGON VIC 3844

- An interview with the student, parents and a senior staff member is held.
- Parents will be notified in writing of the result of the interview.

All applicants, including siblings, are considered as individuals through the interview process. There is no automatic acceptance to the College. All applicants are required to complete the same application process.

The final stage in the enrolment procedure is payment of the \$600.00 bond and the signing of the Parental Agreement where parents agree to:

- Support the College and encourage College standards in the home environment.
- Support their child's program and the academic and disciplinary regulations required by the Principal.

It is also expected that the student desires to attend the College with a willingness to accept and conform to the standards set down by the College.

The student's school report must evidence a willingness to accept the standards set by Flinders Christian Community College.

Prospective applicants requiring further information and/or tours of the College campus are invited to contact the Registrar/Enrolment Officer.

BUSES

The College charters four buses to transport our students to the Latrobe City Campus. Each year the bus routes are re-negotiated with the bus company to endeavour to accommodate as many families as possible.

The Board of Governance consists of Christian business people, educators and parents elected from the Flinders Christian Community College Incorporated Association, which is a small body of people who maintain the function, standards and activities of the College.

MEMBERS OF THE BOARD OF GOVERNANCE:

Chairman	Mr David Flack
Vice Chairperson	Mr Stuart Campbell
Secretary	Mr Justin Coates
Members	Mr David Champion Mrs Val Mason Mr Matt Harridge Mr Frank Hoogenraad
Ex-Officio Member	Mrs Jill Healey (Executive Principal)
Executive Representative Member	Mr Glenn Kruihoff (Director of Corporate Services)