



# Prospectus

---

Welcome to St Laurence's College





Dear Parents,

Welcome to the St Laurence's College prospectus.

As you browse through this publication, and I hope you will take the time to do so, you will discover that Lauries is more than just a school.

We are proud of our student's success. They do well academically in OP and vocational courses, excel in sporting events, make inspiring music and stretch themselves in many different ways. We ensure that they develop their talents, gifts and expanding interests.

However, we are interested in more than worldly success. At Lauries, education provides our young graduates with a spiritual compass for life. The moral principles the boys develop here act as spiritual bearings that support their journey through adult life.

We are proud of our Edmund Rice tradition and its special place in the Lauries story.

I hope that your connection to the College begins here and will lead to a supportive relationship with us.

Yours sincerely

A handwritten signature in cursive script that reads "Ian McDonald".

Mr Ian McDonald

Principal





**St Laurence's College is a Catholic school for boys in the Brisbane Archdiocese. The College, established on its current site in 1915 by the Christian Brothers, is a member of the national educational network of Edmund Rice Education Australia (EREA).**

Boys attending the College from Yrs 5–12 come from across the metropolitan area representing a rich mix of ethnic and socio-economic backgrounds including international students. Boys from religious traditions outside the Catholic faith add richness to the culture of College. The current enrolment is approximately 1800 students, lead by a team of 180 teachers and support staff.

The vibrant, Catholic culture within St Laurence's College contributes to the development of young men, providing an authentic Catholic education in partnership with staff, parents, families and the wider community. This authentic Catholic education aims to promote spiritual, moral, intellectual, emotional, physical, cultural and social aspects of life through the provision of a wide variety of faith experiences and academic, cultural, sporting and service opportunities.

#### **Mission**

St Laurence's College is an evangelising faith community with the Gospel imperatives of love, reconciliation, renewal and care for the poor as central to its purpose. We are all called to a relationship in the community demonstrating the Catholic Church's commitment to the dignity of the individual, recognising that each person is made in the image of God and is a reflection of God's goodness.

The College offers a distinctive educational philosophy based on a commitment to education as liberation. Blessed Edmund Rice, the founder of the Christian Brothers, attempted to change and transform people and society by being counter-cultural. He assisted those in need, protected the weak and vulnerable, and challenged all 'to act justly, to love tenderly and to walk humbly with their God'. These values of leadership, service and co-responsibility are core to the educational opportunities provided within the College.

The educational program at the College aims to enable people to be transformational in their own lives and the lives of others. To this end, each member of the community is encouraged to develop relationships in which every person is empowered and enriched by active participation, cooperation, collaboration and enthusiasm - a community where life may be enjoyed and celebrated with creativity and passion.

#### **Student Welfare**

St Laurence's College ethos fosters a College which encourages boys to pursue their studies with purpose, confidence and promotes their full human growth. Great value is placed on developing positive classroom environments which are conducive to learning. The College has high expectations of student behaviour expectations which aim to promote self-discipline. Our expectations for personal appearance, attendance and punctuality and good conduct enhance self-confidence, self-esteem and good habits for later life.

Student welfare is the concern of every staff member. In its broadest context it covers the care of all students; their emotional, social and intellectual well-being.

Each boy progresses through the College under the guidance of a Head of Year. Each student has a Home Class Teacher who is responsible for a small group of students. The Home Class Teacher takes a special interest in each boy's academic progress and development in a home class group which is the basic pastoral and administrative unit of the school.

The Student Handbook/Diary provides a ready means of communication between parents and teachers. A Peer Support Program with senior students enables them to support younger students especially during their first weeks at the College. In the Senior years, boys have the opportunity to aspire to formal leadership roles in the College.

# The Lauries Journey

## Every boy feels known and valued for being the person that he is.

'The Lauries Journey' is the pastoral program of St Laurence's College. As a Catholic school in the Edmund Rice tradition, it expresses the care and respect for the dignity of each individual within the community.

Metaphorically, it is the journey that each boy will take at this College which will see them grow from a young boy into a young man. It is not a journey that they will take alone, but one that will have the comforting support of their parents, friends and teachers.

'The Lauries Journey' seeks to ensure that every boy feels known and valued for being the person that he is. It seeks to equip him with the knowledge, skills and qualities to develop his character, deepen his faith, widen his friendships and strengthen his self-belief in his own potential. It seeks to establish good relationships.

It is within the context of meaningful relationships between student and teacher that true learning takes place. St Laurence's College has a long proud tradition of Old Boys who see themselves as still on 'The Lauries Journey' because of the significance of the relationships they experienced at school.

### Outdoor Education

Outdoor education is an essential part of the College curriculum. These developmental programs enhance a boy's self esteem and team skills. Students follow a program of increasing challenge culminating in a trek requiring significant self-reliance.



**“...it has been a privilege to have served the school and an honour to have led the cohort.”**

**– Peter Condoleon, College Captain for 2014**

# History & Tradition

**The college is a place of learning; a community of learners and teachers.**

The first development on the hill where St Laurence's now stands was the foundation of a minor seminary for boys called St Kilian's by the first Bishop of Brisbane, Dr Quinn. In 1874, the Bishop urged the Christian Brothers to take responsibility for St Kilian's as the first of their schools in Brisbane. Br Barrett was unimpressed, as he put it, by the frequent flooding of the streets by the river, and so he declined.

In 1899, this historic school, which was in turn under the control of the clergy and lay staff, was destroyed by fire. The new school, St Laurence's owes its foundation to Dr Duhig of whom the Advocate wrote 'His Grace Archbishop Duhig has thrown himself into the work of establishing St Laurence's with his accustomed vigour'.

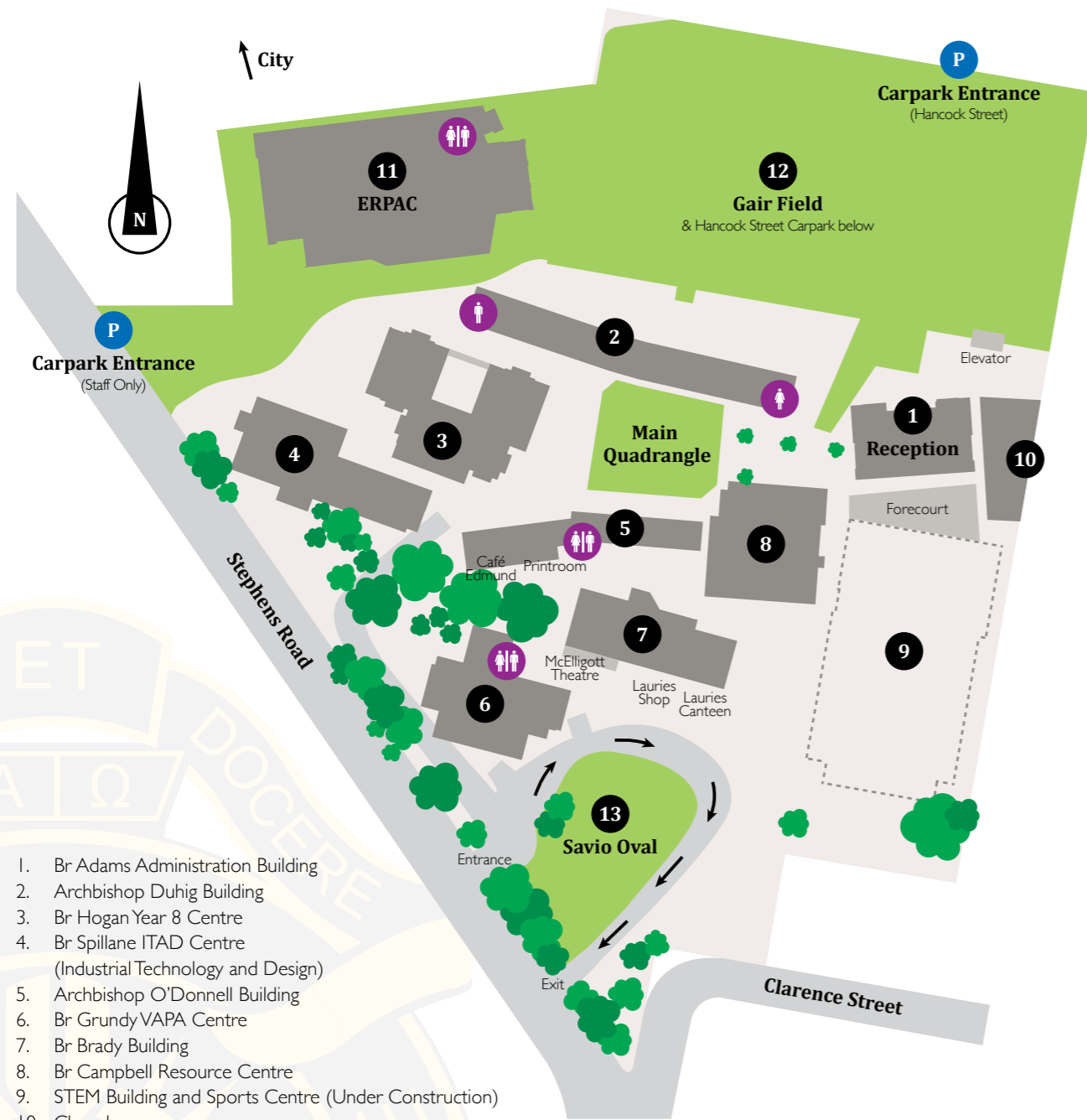
The first staff members, Brs J Hogan, A Brennan, N Doran and D O'Connell and Mr Dean, faced 270 boys on the opening day in 1915. The original building is still standing. Two years later the Brothers' monastery was completed, and these two fine buildings with unpaved playing area between them on the crest of the hill, fulfilled the accommodation needs for many years.

During World War II, the College was taken over by the Army and classes were moved to Greenslopes. A new classroom block was completed in 1961, providing much needed accommodation, and in 1968 the main classroom block over the cliff and the Science block were completed. The needs of the Catholic population of the southside of Brisbane drove this rapid expansion.

The College campus has grown and flourished over the last 20 years to one of the best equipped learning environments for boys in Brisbane supporting boys of diverse backgrounds and talents.



# College Campus



1. Br Adams Administration Building
2. Archbishop Duhig Building
3. Br Hogan Year 8 Centre
4. Br Spillane ITAD Centre (Industrial Technology and Design)
5. Archbishop O'Donnell Building
6. Br Grundy VAPA Centre
7. Br Brady Building
8. Br Campbell Resource Centre
9. STEM Building and Sports Centre (Under Construction)
10. Chapel
11. ERPAC (Edmund Rice Performing Arts Centre)
12. Gair Field
13. Savio Oval



# Curriculum

**The College is committed to providing students with academic and personal skills to equip them for life.**

St Laurence's College offers a program of Studies from Year 5 to 12 where the vision of a holistic education for each student centres on liberation for 'life to the full' (John 10:10).

The College is committed to providing students with academic and personal skills to equip them for life and a flexible career path. Students are encouraged to pursue a balanced general education that engages them at the level of their learning readiness and challenges them to pursue excellence. Teachers, parents and students work in partnership to promote a love of lifelong learning.

The vision for Catholic Education at St Laurence's College is a dynamic educational community for boys and young men that maximises their potential

to be both active contributors to and prophetic voices within an ever-changing society.

While offering a variety of courses at all levels which cater for a range of students' ability, the College has high expectations of student application and achievement. Clear standards expected for classroom work, assignment presentation, homework and examinations are clearly communicated via numerous forums. It is expected parents will work in partnership with the College to achieve the best outcomes for students. Student academic progress is carefully monitored and formal reporting to parents occurs three times per year.

## Enrichment Services

From Year 5 to 12 the College offers Enrichment programs. Enrichment programs have two branches: Extension and Support.

Extension programs include:

- Immersion opportunities
- Gifted and Talented programs
- Days of Excellence
- Local, State, National and International Academic and Vocational Education competition
- University Partnerships
- Career Education and Counseling
- Extension units such as Investigative Science and Technology, offered in Years 9 and 10

Support programs include:

- Literacy and Numeracy support
- ESL programs
- Work, Education and Transition

# Facilities

**Lauries provides a wide variety of state-of-the-art learning spaces.**

St Laurence's College is fortunate to have excellent buildings, grounds and facilities which are conducive to promoting an effective learning environment.

Special features include: well-equipped classrooms, science and computer laboratories, primary and secondary libraries and resource centres and specialist rooms for music, television, graphics, design and technology, to name a few. These facilities are complemented by a state of the art Performing Arts Centre, new Chapel, rooftop field and STEM building (under construction) on the South Brisbane campus.

The College's playing fields are located at Runcorn adjacent to the railway station. Eight fields are enhanced by new change rooms and a function centre.

St Laurence's outdoor education centre is located on 5 hectares on the western bank of Lake Moogerah.

# Primary School Years 5-6



Boys can commence their schooling at St Laurence's College from Year 5. Within the overall structure of Years 5 to 12 we celebrate many occasions together as one school while still maintaining a distinct Primary School identity.

The Primary community has access to a Primary Office, Primary Library and IT Centre, Primary School Learning and Enrichment Centre and outdoor gathering spaces. At the same time, boys have the opportunity to access all the facilities of the College, particularly specialist areas such as Art, Music, Drama and Sports.

Primary boys are well supported by the Year 12 Peer Mentor and Year 6 Mates Programs, which aim to develop a strong sense of belonging and support.

In the Primary School we use 'The Lauries Journey' as a basis for our pastoral care program with an emphasis on forming supportive relationships. This program includes significant community celebrations such as Mother's Day and Father's Day as well as liturgical ceremonies for each year level.

### Primary School Subjects

The subjects currently offered in the Primary School are:

- Computer Awareness
- English
- Expressive Arts (Art, Music, Drama)
- Health and Physical Education
- LOTE (Chinese, Cultural Studies)
- Mathematics
- Religion
- Science
- Studies of Society and Environment

An instrumental music program and choral program are also conducted with students who choose to be involved in Expressive Arts.

Information Technology is embedded in each of these subjects and is supported by the use of interactive whiteboards in all primary classrooms.





# Middle School Years 7-9



Years 7 to 9 are organised according to the principles and practices of middle schooling. In Year 10 students begin transition to the Senior School.

In the Middle School teachers often teach students their core subjects so that positive relationships (important for adolescent boys) with significant adults and peers can be nurtured. Cross discipline connections also facilitate an authentic, directed pedagogy.

Middle School practices at St Laurence's College include:

- Collaborative Planning
- Integrated and learner centred pedagogy
- Negotiated and differentiated curriculum
- Authentic assessment
- Pedagogy – student choice, team teaching, multiple intelligences
- Articulated outcomes planning

## Year 7 Subjects

- Arts (Music, Art, Drama)
- Chinese
- English
- Health and Physical Education
- Industrial Technology
- Mathematics
- Religion
- Science
- History
- Geography

## Years 8 & 9 Core Subjects

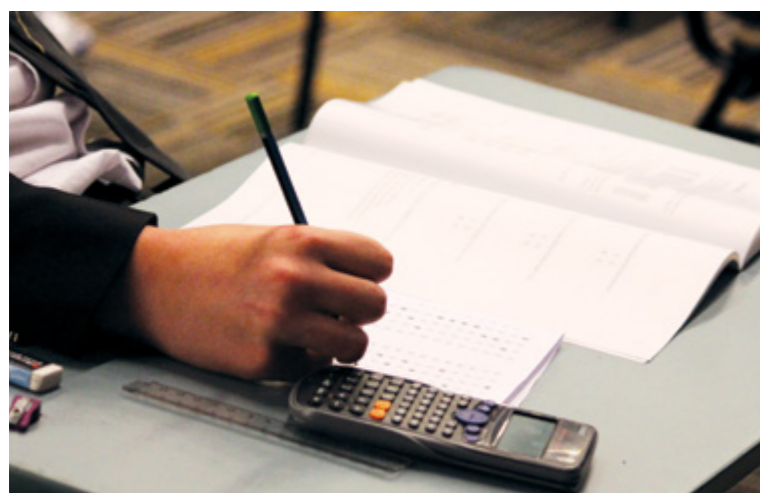
- English
- Health and Physical Education
- Mathematics
- Religious Education
- Science
- History
- Geography

## Years 8 & 9 Elective Subjects

- Art
- Business Studies
- Chinese
- Drama
- Graphics and Digital Technologies
- Design Technologies
- Media
- Music



# Senior School Years 10–12



In Year 10 boys complete core and elective subjects started in Year 9 and prepare for Years 11 and 12. Opportunities to refine their pathway are presented through senior transition subjects such as: natural science, physical science, general science, health, physical education (human performance), vocational trade studies and engineering design and technologies.

In Years 11 and 12, as students study for the Queensland Certificate of Education (QCE), pathways are diverse. Students are encouraged to select a studies pathway that is suited to their interests, abilities or eligibility needs.

The Year 11 and 12 programme offers:

- More flexible choice of study options
- An 'OP' pathway
- A 'Vocational Education' pathway
- Opportunities to study university level subjects
- Opportunities to be sponsored by industries in 'cadet' situations
- Opportunities to study at TAFE
- Work placement opportunities
- School based Apprenticeships and Traineeships

The compulsory elements of the curriculum are:

- Religion and Ethics (SAS) or Study of Religion
- English or English Communication (SAS)
- Mathematics A, B or Pre-Vocational Mathematics (SAS)

## Year 11 & 12 Core Subjects

### Authority Subjects

- English or English for ESL Learners
- Study of Religion
- Maths A or B

### Authority Registered Subjects

- English Communication (SAS)
- Religion and Ethics
- Pre Vocational Maths (SAS)

## Senior School Elective Subjects

### Authority Subjects

- Accounting
- Ancient History
- Biology
- Business Management
- Chemistry
- Chinese
- Dance
- Drama
- Economics
- Engineering Technology
- English Extension (Year 12 only)
- Film Television and New Media
- Geography
- Graphics
- Health Education
- Information Processing and Technology
- Legal Studies
- Maths C
- Modern History
- Music
- Music Extension (Performance Year 12 only)
- Philosophy and Reason
- Physics
- Physical Education
- Technology Studies
- Visual Art

### Authority Registered Subjects

- Business (Cert II in Business)
- Design Studies
- Drama Studies
- General Construction (Cert I of General Construction)
- Engineering (Cert I of Engineering)
- Furnishing (Cert I of Furnishing)
- Fitness (Cert III)
- Recreation
- Diploma of Engineering (Industrial CAD Program)
- Electrotechnology (Cert II)



# Co-Curricular Programs



## Sport

St Laurence's College enjoys a proud record of sporting achievement. Participation in sporting activities, especially team games, is an integral part of the life the College.

Sport is part of the physical education program. Students have a chance of selection in the school's representative teams, which play in the Associated Independent Colleges (AIC) competition. Teams are represented in Rugby, Soccer, Cricket, Swimming, Basketball, Volleyball, Golf, Tennis and Track Field.

Other sporting opportunities are offered through the Metropolitan East Region Sports program and other local club competitions.

## The Arts

The College has an extensive music program. Students can participate in the instrumental tuition program during the school day and join bands, ensembles and choirs, which practise outside school hours.

The College is proud of its reputation in this area and encourages all students to be involved in the

music program. Students are encouraged to become involved in many other arts activities offered by the College. Debating, oratory, musical, dance and drama productions are available.

## Career and Vocational Education

Guidance towards the choice of a career is given both through formal career education and the work experience program. Careers counseling is provided through the Careers Advisor. A careers centre is centrally located on the campus.

## Service Learning

St Laurence's College has the commitment to provide an education that is 'inclusive, relevant and outreaching'. Service and Solidarity Learning (SSL) supports student educational development while contributing to the formation of a more just world. Students learn valuable knowledge, skills and values, through transformational experiences that help them grow into successful, compassionate and just members of society.

Many opportunities are provided to bring people together (solidarity) through acts of charity and justice (service). All who engage in these activities experience some personal transformation. A range of activities are provided to suit student needs and these are expanding as we develop more opportunities for students to be involved in community service.

Students can become involved in:

- Structured Service Learning programs in Year 11 and 12
- Homework help
- Peer mentoring
- Café Edmund
- Sony Camp and a Special Olympics sports day
- Building Across Borders – Immersion program
- HELP – Timor, Vietnam and Malaysia Immersions
- Project Compassion, 40 hour Famine, Walkathon, Australia's Biggest Morning Tea
- Winter Appeal – St Vincent de Paul Society
- Edmund Rice Camps support



# Enquiries

## Enrolment Enquiries

Dominique Pote – Registrar

Phone 07 3010 1104

Fax 07 3010 1188

Email [enrolments@slc.qld.edu.au](mailto:enrolments@slc.qld.edu.au)

## General Enquiries

Office Hours 7.45am – 3.50pm

Phone 07 3010 1111

Fax 07 3010 1188

Email [slc@slc.qld.edu.au](mailto:slc@slc.qld.edu.au)





**St Laurence's College**

82 Stephens Road, South Brisbane Qld 4101  
Phone 07 3010 1111 • Fax 07 3010 1188 • Email [slc@slc.qld.edu.au](mailto:slc@slc.qld.edu.au)

[www.slc.qld.edu.au](http://www.slc.qld.edu.au)