



Welcome to Our Lady of the Sacred Heart College Bentleigh

Prospectus

Memorare to Our Lady of the Sacred Heart

Our College prayer is the Memorare to Our Lady of the Sacred Heart. We are inspired by the example of Our Lady of the Sacred Heart and reflect that in our College prayer.

Memorare means 'remember' in Latin and before we pray the Memorare together, we ask the students and staff to provide any special intentions for their prayer, including people and places they would like to have remembered in prayer.

Remember, Our Lady of the Sacred Heart
the great things the Lord has done for you.

He chose you for his Mother.

He wanted you close to his cross.

He gives you a share in his glory.

He listens to your prayer.

Offer him our prayers of praise and thanksgiving;
present our petitions to him.

Let us live like you in the love of your Son,
that his Kingdom may come.

Lead all people to the source of living water
that flows from His Heart,
spreading over the world

hope and salvation, justice and peace.

See our trust in you; answer our prayer.

Show yourself always our Mother. Amen.



Welcome to OLSH College

Our Lady of the Sacred Heart College (OLSH) is an independent Catholic secondary school for girls, administered by the Daughters of Our Lady of the Sacred Heart. The College is built on a tradition of inspiring excellence in girls' education and nurturing a deep connection to each other.

This connection has at its foundation a commitment to growth as human beings who recognise and live compassion, who strive to give of our best in all that we undertake and who are captured by the call to reach out to others from our hearts.

We provide a dynamic learning environment that offers opportunity for academic growth across a broad range of

subjects and fosters critical thinking and a curiosity for learning. We encourage our students to pursue an education that reflects their passion and talents, and to take every opportunity presented to them in the classroom, in co-curricular and outreach activities and as leaders representing their peers across all aspects of life at the College.

We are inspired by the vision of Jules Chevalier (msc), who knew God's Heart loved without limits. In this same spirit we are called to live out our motto *Regnet Christus - May Christ Reign...* to be on earth the Heart of Christ.

We are delighted to be welcoming you to our community and look forward to you being a part of our OLSH College family.



Anne O'Loughlin
Principal – OLSH College Bentleigh



Our Lady of the Sacred Heart College Bentleigh stands on the lands of the Bunurong people and we acknowledge them as Traditional Owners.

We pay our respects to their Elders, past, present, and emerging.

We are HEART people

Our mission: *"May the Sacred Heart of Jesus be everywhere loved"* is our tradition. All who belong to the family of Our Lady of the Sacred Heart are called to live out this motto. It is to live the very life of Jesus... to be on earth the Heart of Christ.

We are heart people who are faith filled, reverence relationships, pursue excellence and touch the hearts of others.

Our vision: We seek to uphold and strengthen our commitment to building an outstanding Catholic girls' college characterised by unity of purpose, professionalism and the drive for excellence.

Our College motto

The Latin motto - **Regnet Christus** - means 'May Christ Reign', which is usually expressed as 'May the Sacred Heart of Jesus be Everywhere Loved!'

Through the expression of these words and in our actions, the love of God, brought to us in Jesus, will be the motivating force in our lives. In living by this love, we bring into our world, the love, peace, compassion, justice and hope which Christ came on earth to give.

These important words form part of our College crest and we attach the words Regnet Christus to our celebration of excellence ceremonies. Our senior Regnet Christus leaders are chosen for their example of living our OLSH pillars. Through their words and actions, these leaders personify what it means to be on earth the heart of God.



Our OLSH Pillars

Our motto “May Christ Reign!” is our tradition. All who belong to the family of Our Lady of the Sacred Heart are called to live out this motto. It is to live the very life of Jesus...to be on earth the Heart of Christ! We express our OLSH Spirit in the four pillars of OLSH education.

We are Heart people who are Faith-Filled

We believe in God’s personal love for us. This gives us meaning and purpose in our lives and enables us to help others find meaning in their lives too. We value:

- the incarnation (Jesus becoming human) as foundational to our personal faith journey
- prayer, our Catholic tradition, and involvement in the wider church community
- relevant liturgy and retreat experiences
- a spirit of reflection.



We are Heart people who Reverence Relationships

We believe in the dignity of every human person. Our OLSH family is both local and international and we make an effort to build and support community. We value:

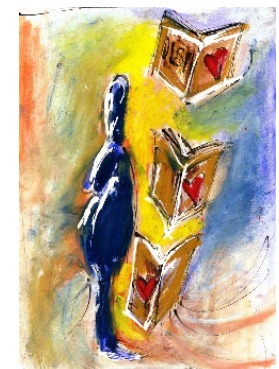
- hospitality and a welcoming spirit
- gratitude, simplicity, integrity, compassion and forgiveness
- inclusion of all
- collaboration and consultation
- discernment and the sharing of wisdom
- teams and team leadership.



We are Heart people who Pursue Excellence

We believe in Jesus’ words ‘I have come that you may have life and have it to the full’ (John 10:10). We pursue excellence in everything we do. We value:

- striving for our personal best
- academic achievement
- creativity, resilience and perseverance
- education of the whole person and life-long learning
- critical thinking and the provision of a dynamic curriculum
- pushing the boundaries of our capabilities
- the development of leadership skills.



We are Heart people who Touch the Hearts of others

We believe in our call to be united with the mission of Jesus. Together we seek to build the Kingdom of truth and life, of holiness and grace, of justice, love and peace. Our tradition of service and outreach and our option for the poor are vital aspects of our OLSH identity. We value:

- a vision that dares to be different
- courage, hope, determination and vitality
- global responsibility and stewardship of creation
- reconciliation with our Indigenous brothers and sisters
- reaching out to others, locally and globally
- leadership that serves and empowers others.



Faith and Mission

Father Jules Chevalier, Missionary of the Sacred Heart (msc) founded the Congregation of the Daughters of Our Lady of the Sacred Heart in Issoudun, France, on August 30, 1874.

Jules Chevalier saw Mary the mother of Jesus as the first disciple and witness of the love of Jesus and was inspired to honour her under the title Our Lady of the Sacred Heart. He had an all-encompassing belief in the love of the Heart of Jesus for each of us and for all people and, at the same time, a belief in the capacity of the human heart to love and be loved. He believed in the unconditional love of God as revealed in the Heart of Jesus Christ and in the intrinsic relationship between the heart of God, the heart of Christ and our human hearts.

Jules Chevalier saw a particular value in the education of girls, as a way of proclaiming and giving witness to the love of God in our world.

Religious Education is part of the core curriculum for all students from Years 7 to 12. The program seeks to provide students with a comprehensive knowledge of the Catholic faith, along with a capacity to think critically, reflect deeply and translate values into action.

The classroom-based curriculum complements the College's wider faith and mission ethos, placing emphasis on the charism of the Daughters of Our Lady of the Sacred Heart and the OLSH Pillars of Education, the pursuit of social justice and the central place of liturgy and prayer in Christian living.

Prayer is at the heart of our life as a College community. All College assemblies, ceremonies and meetings begin with prayer. We join together throughout the year to express our faith through the celebration of Eucharist. These celebrations are a valued part of the OLSH College tradition, marking special days and times in the Church's liturgical year.

Connecting locally and globally

Our fourth pillar, *We are heart people who touch the hearts of others*, inspires us to reach out to our local and international community, supporting those in need. Our College outreach initiatives mirror Jesus' love and care for those on the margins of our society.

Students across all year levels are encouraged to participate in a range of outreach activities throughout the year, including:

- visiting residents at Baptcare (next to the College) to assist with lunchtime activities.
- food preparation and distribution for the St Kilda Food Van – muffin baking by students from all years and food distribution by senior students.
- fundraising – for local and overseas charities, supporting the work of the OLSH sisters and others via our Lenten Appeal, blanket appeal, Feast Day fundraising and Advent appeal. We raise close to \$30,000 for these charities annually.

Through our support of OLSH Overseas Aid, we support the work of the OLSH Sisters working both here in remote Aboriginal communities and overseas in countries such as Sudan, South Africa and the Philippines.

Our students have the opportunity to participate in immersions to support the work of the OLSH Sisters, in places such as Samoa.

We recognise that the task of reconciliation with our Aboriginal brothers and sisters is the responsibility of all Australians. We are committed to working for reconciliation and growing healing, justice and peace in this land.

This commitment is put into action through practical reconciliation and justice, spirituality and cultural recognition and awareness raising. We do this as a FIRE (Friends Igniting Reconciliation through Action) Carrier school, with student-led activities to put reconciliation into practice.



Learning

Education in the OLSH Tradition allows our students to be part of authentic learning of the spiritual, intellectual, emotional, physical, and social development of the whole person. Our OLSH learning environment supports, challenges and values the contribution of all learnings, and creates a space where students take supported risks with their learning. In our learning community, positive relationships are fundamental to learning and teaching.

We create a stimulating and challenging environment in learning and teaching. We acknowledge and celebrate the achievements of all students and staff which creates space for personal and group success.

We plan dynamic curriculum that prepares students to meet the challenges of the 21st century, allowing them to play an active role in shaping their future. We value collaborative learning and develop those skills in the classroom and in the wider school.

Junior years

Year 7 students are enrolled in six core subjects and seven specialist subjects. The

year level is arranged into core groups and the students stay together in these groups for the core subjects. This provides an opportunity to get to know other students and classroom spaces as they adjust to secondary school life.

The range of core and specialist subjects offered in the junior years provides the opportunity to experience a range of disciplines before students begin to select elective subjects in the middle and senior years.

Middle years

Students continue with six core subjects and select six elective subjects across the language, arts, technology and sport disciplines. We support subject selection through parent and teacher discussions, to ensure students are informed about subject content and suitability for future year subject selection.

Senior students

We offer 29 subjects to our senior students across the VCE and VCE Vocational Module program, providing a broad curriculum choice for students to support their pathways to further education and careers.



A place for all learners

We recognise that our students have a breadth of talents, learning styles and learning needs. We support this diversity through tailored support programs for individual students and through opportunities to enrich and extend learning.

Learning support

Our Learning Diversity Department works with parents and teachers to support students with learning needs.

A customised program is developed for each student that draws on any external assessments or established learning plans, and consultation with the student and parents. The program is shared with the student's teachers and Learning Mentor to ensure all are aware of the agreed approach to learning and assessment.

These plans are reviewed regularly and communication with parents is maintained to ensure the student feels supported and is engaged with their learning.

Learning enrichment

We offer extension programs for students who wish to expand their learning in particular areas and develop their talents further.

These opportunities include participation in academic competitions and tournaments across all disciplines.

Currently our students participate in state, national and international competitions in the areas of science, maths, languages, ethics, music, art, problem solving, debating and politics.

These competitions help to develop critical thinking, public speaking, problem solving and collaborative working skills, as well as the opportunity to represent the College.

Careers and pathways

Supporting our students with the exploration of pathway and career opportunities and possibilities is a vital aspect of the learning experience for all students. We aim to ensure our students are informed and guided in their decisions, so they can maximise their learning programs, possible career opportunities and potential further study pathways.

Our Careers and Pathways Coordinator provides advice to students and parents and offers a program of opportunities for students to connect with tertiary institutions and understand their vocational strengths.

Student Wellbeing

We are committed to developing young women of heart who will lead and serve others and make a positive contribution to the community. Student Wellbeing is enhanced through range of programs and services, and a foundation of pastoral care that encourages students to feel a deep sense of belonging.

Our Pastoral Care model supports students to develop connections within the year level and across the school through our vertical house structure.

At the heart of this model are our Learning Mentor Groups, where students from Years 7 to 12 meet each morning for homeroom with their Learning Mentor. These House-based groups help to build House spirit and a connection with our history, as well as create opportunities to connect with all year levels in co-curricular activities such as sports carnivals and Feast days. The House system enhances a great sense of connectedness and peer mentoring across the College.

For students joining the College in Year 7 we provide a transition program of activities and structures that support students making friendships, settling into new routines and getting to know staff.

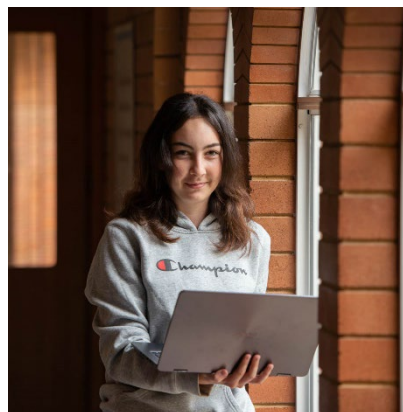
The transition program is designed to assist new students in familiarising themselves with the OLSH College story, its people, spaces and traditions. Students joining at other year levels are supported by their Learning Mentor and a student buddy for their first weeks at the College.

Child safety

We are committed to being a nurturing, child-safe school where children and young people are respected, their voices are heard and where they are safe. Our commitment and responsibility to child safety is driven by Jesus Christ's message of hope, love and care for all.

Our OLSH Pillar, *We are Heart people who Reverence Relationships*, has at its core the belief in the inherent dignity of all people. We must always strive to be faithful to this in who we are and how we live.

Child safety is a shared responsibility. Every person involved in OLSH College has an important role in promoting child safety and wellbeing and promptly raising any issues or concerns about a child's safety.



Our unique Year 9 program: *Issoudun*

We have given our Year 9 program a special name, Issoudun, in recognition of this pivotal year in our students learning journey. Issoudun is the town in France where Father Jules Chevalier founded the Congregation of the Daughters of Our Lady of the Sacred Heart.

The traditional curriculum program is augmented by an interstate residential program (Hartzer) and inquiry-based activity program (Nous Sommes) that foster independence, cooperative learning and positive relationships.

We are the only Catholic secondary school in Victoria to offer an interstate residential program and we are proud to have delivered the program for more than a decade.

Hartzer

The Hartzer Program is a unique opportunity where our students spend four weeks in the Southern Highlands of New South Wales, building their independence and completing their curriculum in a different setting and format.

The residential program provides our students with the opportunity to celebrate their giftedness, grow in faith, embrace

their learning, build positive relationships and teamwork skills, venture beyond their comfort zones, develop confidence and connect with our OLSH history.

The program includes visits to Canberra and Sydney, day trips and hikes around Bowral, as well as a daily routine of completing inquiry-based learning, personal training, sharing meals and evening study time together and making connections through the shared experience.

"It was a journey full of new memories, learning, independence and a long line of new experiences."

Nous Sommes

The Nous Sommes program allows for areas of the Victorian curriculum to be taught in creative and dynamic ways. It uses inquiry-based learning and encourages the girls to develop their creativity and design thinking, work collaboratively in teams and develop their independence.

The program includes onsite and offsite activities across a range of disciplines and culminates in a research and presentation project, the *Heart Project*, reflecting a topic that each student has a deep connection to.

Student Leadership

We believe that all students have the capacity to lead and all voices are equal. For this reason the Student Leadership Team has representation from students at each year level. Mentoring and inter-year level connections are key to the OLSH Student Leadership Team.

The roles in our Student Leadership Team are:

- The **Student Executive Team** – consisting of the College Captain, College Vice Captain and two Senior Prefects
- **Regnet Christus Leaders** – Year 12 Leaders who model what it is to be a heart person and who embrace and live fully our OLSH spirit
- **Faith and Mission Captains** - Representatives from Years 7 to 11
- **Environment Captains** - Representatives from Years 7 to 11
- **House Captains** - Representatives from each year level Years 7 to 12

- **Specialist Captains** - Appointed from Year 11 and include Sports Captain, Performing Arts Captain, Public Speaking and Debating Captain

Our student leaders play an authentic and active role in the life of the College.

The leaders work together to build College and House spirit and to organise days integral to the life of the College, including our Feast Days, Swimming and Athletics Carnivals, Performing Arts Spectacular, and awareness and support of our OLSH International community.

Leadership extends beyond these formal roles, through opportunities such as our Student Ambassador program and participation in co-curricular activities.



Beyond the classroom

We offer a wide range of co-curricular activities across all year levels and throughout the year. The level of involvement can be as brief as participation in a lunchtime activity or as extensive as membership of a sporting, performance and public speaking team.

The student and staff-led programs are offered across all areas of sport, performing arts, visual arts, public speaking, clubs and social justice.

Sport

Sixteen individual and team sports are offered at OLSH College across the summer and winter season. Students can try out for teams and join training sessions before and after school and at lunchtime.

These teams compete in the Catholic Girls Sports Association of Victoria (CGSAV) and South Easter Girls Activities Program (SEGAP) inter-school competitions, and some activities such as athletics, swimming and diving, have a pathway through to state level competition.

Students are also encouraged to participate in sport during lunchtime and can join a weekly morning fit-club, working through a program together in our gym.

Our annual swimming and athletics carnivals are the highlight of the sporting calendar each year, with all students

encouraged to compete for their house across a range of events.

Music

We have a busy performing arts calendar, offering opportunities for students to display and build their talents in all aspects of performing arts including acting, singing, dancing, instrumental music and backstage production such as lighting, set production, hair, makeup and costume design.

Opportunities include:

- junior, senior and whole-school musical and drama productions, presented in collaboration with neighbouring boys' colleges.
- music ensembles including choirs, jazz and rock bands and a string ensemble who perform at College events and in competitions.
- individual instrumental music lessons for a range of string, woodwind, brass and percussion instruments.

Clubs

Our students are invited to participate in a range of lunchtime clubs including philosophy, diversity, environment, art, dance, board games and book clubs. These clubs are staff and student-led and their focus is often initiatives that are introduced across the College, such as waste reduction.

Our learning spaces

Our College is located in the south-eastern Melbourne suburb of Bentleigh. Our grounds feature outdoor spaces and greenspace for sport and recreation time, and a range of buildings reflecting the heritage and modernisation of our campus.

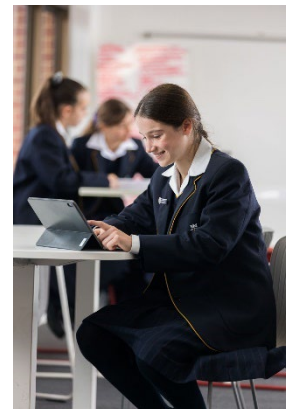
We have a state-of-the-art Performing Arts Centre, with retractable seating for an audience of 220, a full theatrical lighting rig and audio-visual equipment. Our hall seats 600 and is used regularly for assemblies, Mass and parent events. This area is enhanced by a Dance Studio, rehearsal rooms, a fitness studio and sports tutorial room. The hall and adjacent gym are also used for gymnastics and sport classes as well as team sport training sessions.

Our OLSH Centre is a beautiful space, used for staff and parent events, meetings and special events. There is a full kitchen adjacent to this space, used by our canteen during the week and complemented by our café and deck space for outdoor eating.

The Chapel, built in 1934, is a beautiful and most sacred place treasured by the College and its students, past and present. It is used daily as a prayer sanctuary for students and staff.

We have a well-resourced library, managed by experienced librarians who are available to support students with research work. The library is open for extended hours and provides a range of fiction, non-fiction and electronic resources.

The outside spaces on our campus include four flexi-pave courts used for tennis and netball, and a grass field area. Our grounds have lovely gardens and spaces for the students to enjoy their recess and lunchtimes together.



Transport

The College is well serviced with public transport options. Patterson Station, on the Frankston railway line, is 400 metres from the College and many students walk down Patterson Road from the station to the College each morning and afternoon.

There is a bus stop outside the College on Jasper Road that brings students to the College from areas to the east and west of Jasper Road. The bus stop is monitored by College staff at school arrival and departure time and there is a pedestrian

crossing next to the bus stop to ensure students can cross the road safely.

Time-restricted parking is available outside the front (Jasper Road) and back (Robert Street) of the College for parents picking up or dropping off students by car. Students cycling to school can lock their bikes in a shed next to our sports courts.

Students can enter the College via gates on Jasper Road or Robert Street. These gates are open from 8am.

Application for enrolment



Our major intake is for Year 7 students and we welcome enrolments at all other year levels. More enrolment information and application details can be found on our website via this QR code or <https://www.olsh.vic.edu.au/enrolment/enrolment-overview>.





Our Lady of the Sacred Heart College Bentleigh
111 Jasper Road
Bentleigh VIC 3204
Ph: 8520 9200
Email: office@olsh.vic.edu.au
Website: <https://www.olsh.vic.edu.au/>

